



THE SPOTLIGHT



Editor: Pat Boera

www.lyrictheatrevt.org | office@lyrictheatrevt.org

February 2023

EXECUTIVE DIRECTOR'S MESSAGE

By Erin Evarts

We are over-the-moon to have the Lyric Creative Space brimming with activity right now!

From *Shrek* rehearsals and preparations to a busy schedule of space rentals, we are thankful that there is rarely a quiet moment on Green Tree Drive. Still, there is so much more coming down the pike. Planning is well underway for our big anniversary celebrations next year, our summer TYA production will begin to ramp up soon, and LyricKids Camp registrations and Delano-Nulty Award applications open this month. We hope that you will find one of the many ways you can support Lyric through volunteering your time or by making a donation to support our mission and the work we do all year long.

MUSINGS FROM THE SWAMP: PRODUCER'S NOTE

By Kerry Farrell

Now that we have a cast, every corner of the swamp on Green Tree Drive is buzzing and freak flags are flying. On any given rehearsal night you can find a group of actors singing in the Tampa Room with Craig and Arianna, another group in the rehearsal hall dancing their hearts out with Kyla and Ellie, and then yet another group working on character development and blocking scenes in the small rehearsal space with Chris and Freda. And the fun doesn't stop there.

The costume crew is busy constructing and fashioning the multiple (to put it mildly since some cast members will have four outfits) costumes. When you leave the costume shop and head down the hall you will find the Prop Tarts creating s'nogthers (don't know what a s'nogther is, then come see the show!) and other whimsical props. The set construction crew has been working on the set pieces. The castle is assembled and ready for Cathie Covey with her squad to start painting! There literally is not an empty room to be found. Whenever I leave the swamp to head home it is with a sense of gratitude for all the volunteers and enthusiasm in the anticipation of seeing it all come together after months and months of preparation.

If you have not already found yourself in the swamp and want to join the merrymaking, here are some of the crew work times and contact information. Don't see what you are interested in?

Here is the link for [volunteer opportunities](#) or contact me, Kerry Farrell, at kkfrn3@gmail.com.

CREWS WORKING AT THE LYRIC CREATIVE SPACE

Costumes: Tuesdays, 9:00 a.m.-Noon; Wednesdays and Thursdays, 6:30-8:30 p.m.; Sundays, 1:00-4:00 p.m.
Leah Burke, Costume Designer; Maureen Fraser, Construction Chair; Sharon Patno, Costume Shop Manager; lyricvtcostumes@gmail.com

Set Construction: Mondays, Tuesdays, Fridays, 6:30-9:30 p.m.; Saturdays, 9:00 a.m.-Noon.
Curt (Walter) Curtis, Set Construction Co-Chair, whiterabbitoo@yahoo.com; Len Rubin, Set Construction Co-Chair, ljrubin2@comcast.net

Properties: Mondays and Wednesdays, 6:30 p.m.
Lesley Graham, Property Chair, LAGProps@outlook.com

Set Decoration: Sundays 1:00-4:00 p.m.; Wednesdays and Thursdays, 6:00-9:00 p.m. Cathie Covey, Set Decoration Chair, Cath_717@yahoo.com

SPOTLIGHT SHOUT-OUT

By Kerry Farrell

This month the membership committee would like to give a shout out to Becky Millard, *Shrek's* stage manager. Becky joined Lyric as the stage manager for *Looking at the Heart of Saturday Night* in 2021. Since then, Becky has been a youth actor assistant for *Matilda* and director for our Theater for Youth Audiences summer production, *Ivy + Bean*. *Shrek* is Becky's first-time stage managing for a mainstage show but you would have never known it. She seamlessly ran the process from audition forms to casting calls which was not easy with 136 auditionees. Stage managing is a job that requires detail, organization, patience, communication expertise, flexibility, and initiative. Becky hit the mark on all and the *Shrek* team and cast are excited to continue the journey with Becky and her assistant Todd Hanley.

SEEKING PROPOSALS FOR FALL 2024

By Jennifer Warwick

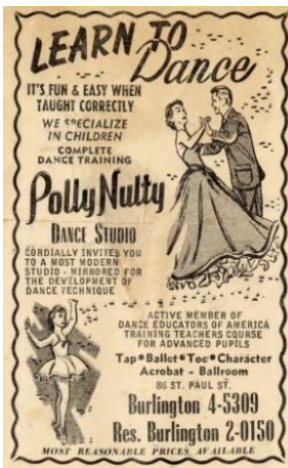
The Production Selection and Evaluation Committee is looking for proposals for fall 2024. We are seeking core team members (Producer, Director, Music Director, Choreographer) to propose a show of their choice by this May. It's not too soon to get the ball rolling. If you are interested or need any help or answers to questions, please contact Jennifer Warwick, Chair of the Production Selection Committee, jenw.sokol@gmail.com, or Erin Evarts, erin@lyrictheatrevt.org.

SHREK THE MUSICAL WELCOMES NEW TEAM MEMBERS

The Shrek team is delighted to welcome Rory Craib, Master Electrician; Merrill Cameron, Dance Rehearsal Assistant; Anna Rossi, Co-Head Dresser; and Madeline Larrow, Party Planner.

2023 DELANO-NULTY AWARD

The Delano-Nulty Award application for 2023 is now live on the website. If you know of a high-school student who aspires to pursue further education in the performing arts, please make them aware of the scholarship. The award honors two founding members – Howard Delano and Polly Nulty. Your editor thought it would be nice to educate the membership about these early visionaries. This issue will feature Polly Nulty.



Polly Nulty: “A Strong and Impressive Style”

(To see the full article and view the photos which are referenced, go to: [Work of Art: Dancing Together in Vermont | \(uvm.edu\)](https://www.uvm.edu/workofart/dancing-together-in-vermont/)

Polly Nulty (1923-1992) owned and directed her dance studio for 30 years, providing inspiration and guidance to a generation of Burlington children. Nulty started teaching neighborhood kids for free in her home in 1947, when she could spare the time from her responsibilities as a homemaker, wife, and mother. Enrollment soon increased to about 60 students and she launched a business, with classes at Burlington’s Heineberg Club. Outreach to surrounding towns included Stowe, Morrisville, Waterbury, Richmond, Essex Junction, and more.

Over the course of her dance career, Nulty studied with the Jack Stanley School of Dancing in New York and, to keep her skills sharp, attended dance classes at the University of Vermont and at conventions in Boston and New York. By 1957, she had become a member of Dance Educators of America, after a difficult four-hour examination that included assessment of her choreography, teaching, and knowledge of music. Enrollments rose to 250 to 300 students. By the mid-1950s, Nulty had established a custom studio space at 86 St. Paul Street, complete with a waiting area, barre, and mirrored wall. Eventually, the business came full circle with a studio in her new home on Pearl Street.

Months of dedication and training culminated each year in a grand recital, bringing the whole studio together to entertain and impress an audience full of family and friends. The combination of bold costumes, bright lights, music, and excitement all around made for strong memories. The picture of the 1952 recital below includes a glimpse of the larger studio community making up the capacity audience at the Nazareth School, later St. Joseph’s. Note the standing ovation in progress from the balcony – a fun night and a happy memory for the admission price of just 60¢.

Modeled after the famous Radio City Rockettes, Nulty founded The Pollyettes dance chorus and precision drill team about 1954. Comprised entirely of high school students, the Pollyettes maintained an impressive schedule of public performances for a variety of fraternal, religious, and benevolent organizations, even traveling to appear on local television in Schenectady and Plattsburg, New York in 1955.

While the team’s namesake and dance instructor was Polly Nulty, their drill instructor was Sergeant Mina Yeager (second from left in photo above), a recruiting officer in the Women’s Army Corps (WACs). Yeager provided drill instruction without charge in a style similar to the basic training required of WAC recruits.

Nulty retired in 1977. Former pupil, teacher, Pollyette, and daughter-in-law Angie Olio Nulty (1952-2018) continued the legacy by running her own studio for 25 years. There, the third generation of Nultys became dance students alongside many other Burlington children.

NEWS ABOUT LYRIC ALUMNI

The Lamoille County Players’ Lifetime Achievement Award was recently presented to Perry and Dean Burnell. Lyric members will recall Dean’s memorable portrayal of Hysterium in our 2005 production of *A Funny Thing Happened on the Way to the Forum*. Congratulations!



Dean Burnell with John Gravel and Doug McGown

ON OTHER STAGES

★ The Flynn Center's Broadway lineup for the upcoming season includes *The Book of Mormon*, February 28, March 1 and 2; and *Stomp*, April 23. Tickets/info: flynnvt.org

★ Northern Stage presents *'Bov Water*, January 25-February 12, at the Barrette Center for the Arts. Tickets/info: northernstage.org

★ Very Merry Theatre presents *The Adventures of Mittens, Moppet and Tom Kitten*, February 14; *The Pirates of Penzance*, February 14 and 15; and *Winnie the Pooh*, February 16, at the O.N.E. Community Center. Tickets/info: verymerrytheatre.org

★ Middlebury Community Players present *The Importance of Being Earnest*, February 16-19, at Middlebury's Town Hall Theater. Tickets/info: middleburycommunityplayers.org

★ Essex Community Players present *Significant Other*, February 24-March 4, at Memorial Hall. Tickets/info: essexplayers.com

★ Valley Players present *Murder by Membership Only*, March 2-19. Tickets/info: valleyplayers.com

★ Vermont Stage presents *Airness*, March 8-26, at the Main Street Landing Performing Arts Center. Tickets/info: vermontstage.org

★ Shelburne Players present *The Somewhat True Tale of Robin Hood*, March 17-25, at Shelburne Town Center. Tickets/info: shelburneplayers.com

★ Lost Nation Theater presents *Pass Over*, April 13-30, at Montpelier's City Hall. Tickets/info: lostnationtheater.org

★ Lamoille County Players' upcoming season at the Hyde Park Opera House features *August: Osage County*, May 5-14; *Let It Be: A Musical Celebration of the Beatles*, July 20-30; *The Haunting of Hill House*, October 6-15; and *The Foreigner*, December 1-10. Tickets/info: lcplayers.com

★ Williston Community Theatre presents *Little Shop of Horrors*, June 22-24, at Isham Family Farm Barn. Tickets/info: willistoncommunitytheatre.com



CAMP REGISTRATION IS OPEN!

Registration for LyricKids Summer Camp opens on Monday, February 6.

Camp Week One: July 17-21, 2023

Ages 8-11: *The Aristocats Kids*

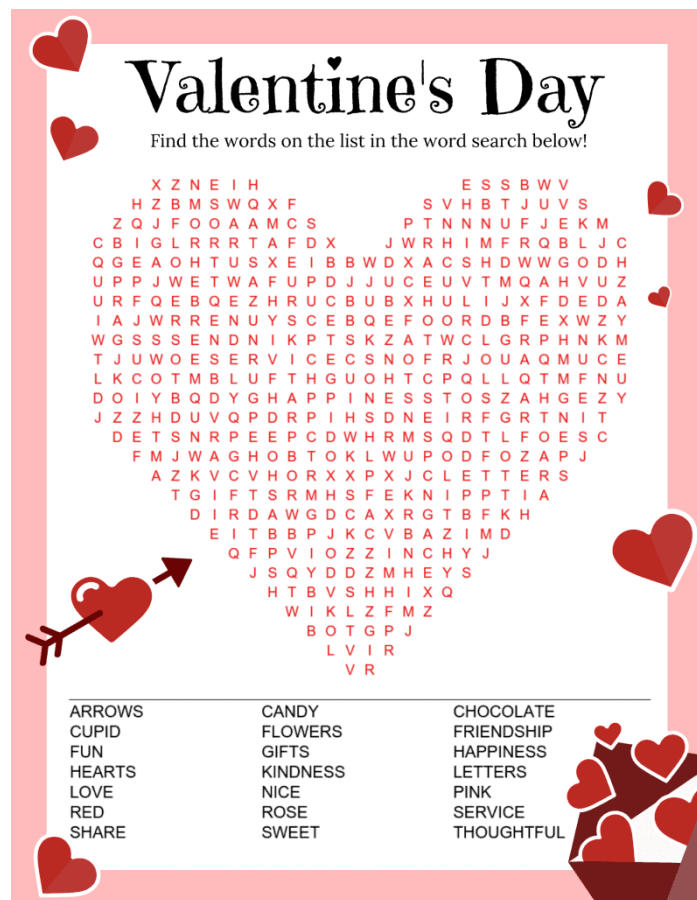
Ages 12-18: The Art of Scenic Design

Camp Week Two: July 24-28, 2023

Ages: 11-15: *Raise Your Voice!* Cabaret Camp

Stay tuned for information about our half-day dance camps scheduled for August 14-18, 2023.

Info: <https://lyrictheatre.org/portfolio/lyric-kids/>



Source: [valentine's day word search - Bing images](#)

17 OF THE GREATEST MUSICAL THEATRE LOVE SONGS

Source: Read the full article at [17 of the Greatest Musical Theatre Love Songs \(theodysseyonline.com\)](#)

"All I Ask of You" from *The Phantom of the Opera*

"Maria" from *West Side Story*

"Music That Makes Me Dance" from *Funny Girl*

"Something Good" from *The Sound of Music*

"Dulcinea" from *The Man of La Mancha*

"Falling Slowly" from *Once*

"Unusual Way" from *Nine*

"With You" from *Ghost*

"How Could I Ever Know" from *The Secret Garden*

"I'll Know" from *Guys and Dolls*

"The Way He Makes Me Feel" from *Yentl*

"Love Never Dies" from *Love Never Dies*

"One Hand, One Heart" from *West Side Story*

"If I Loved You" from *Carousel*

"Some Enchanted Evening" from *South Pacific*

"Take the World Away" from *Little by Little*

"Somewhere" from *West Side Story*

How many of these songs are on your playlist?



**7 Green Tree Drive
South Burlington, VT 05403**

The Spotlight: A monthly publication of Lyric Theatre Company. To submit material for the next issue, email boerap@champlain.edu. Distribution questions? Call 802-658-1484.

Deadline for March issue: February 28, 2023

It's time to get your tickets!

AT YOUR SERVICE—LYRIC THEATRE COMPANY BOARD & STAFF

Kerry Farrell	kkfrn3@gmail.com
Cheri Forsythe	forsythecheri@gmail.com
John Gravel	
Kylie Halpin	halpinkylie@gmail.com
Howard Kalfus	hkalfus@comcast.net
Steve Kendall	stepkend@comcast.net
Mary Margaret Lee	MaryMLVT@gmail.com
Serena Magnan O'Connell	serenamagnan@hotmail.com
Vonnie Murad	
Andy Pearson	apearson@sbschools.net
Rebecca Raskin	rebeccaraskin@msn.com
Hillary Read	hbread@gmail.com
Nate Venet	natevenet@gmail.com
Jennifer Warwick	jenw.sokol@gmail.com
Dorothy Wright	
Erin Evarts, <i>Executive Director</i>	erin@lyrictheatrevt.org
Doris O'Brien, <i>Bookkeeper</i>	doris@lyrictheatrevt.org
Ryan Addario, <i>Dev. & Marketing Coordinator</i>	office@lyrictheatrevt.org

Lyric Office Address: 7 Green Tree Drive, South Burlington, VT 05403

MEETING TIMES FOR LYRIC'S STANDING COMMITTEES

Board (Chair: Serena Magnan O'Connell): 3rd Tuesday of the month, 6:30 p.m., Lyric Creative Space
Facilities (Chair: Cheri Forsythe): 1st Monday of the month, 6:00 p.m., Lyric Creative Space
PR/Development (Chair: Kylie Halpin): 1st Wednesday of the month, 6:00 p.m., Lyric Creative Space
Education (Chair: Vonnie Murad): 2nd Tuesday of the month, 6:00 p.m., Lyric Creative Space
Finance (Chair: Stephen Kendall): 2nd Friday of the month, 12:00 p.m., Lyric Creative Space
Membership (Chair: Kerry Farrell): 4th Tuesday of the month, 7:00 p.m., home of Kerry Farrell, 19 Pheasant Way, South Burlington
Production Selection (Chair: Jennifer Warwick): 2nd Wednesday of the month, 7:00 p.m., Lyric Creative Space
Outreach & Inclusivity (Chair: Howard Kalfus): 2nd Thursday of the month, 6:00 p.m., virtually on Google Meet using this link: <https://meet.google.com/sst-xjei-kfo>



**April 13-16, 2023
Flynn Center MainStage
Burlington, VT**

Generous support from



Thanks to our Season Sponsor

