

EXECUTIVE DIRECTOR'S MESSAGE

By Erin Evarts

I can hardly believe it's already time for Lyric Caroling, Holiday Pops, and our next Main Stage production to "Kick-Off" in earnest! I am so excited to be able to celebrate together again this year, all while we busy ourselves with preparations for our "spring in the swamp". This joyous time of year is also the season of giving, and Lyric depends on the incredible support we receive from our community. Donations of every size make it possible for Lyric to continue the work we do all year long to provide opportunities and entertainment to more and more members of our ever-growing circle of volunteers, partners, and patrons. Please join so many of your neighbors and friends in supporting Lyric with a donation this season. We are incredibly grateful for every single hard-earned dollar that is sent our way, and accept it as a direct investment in this community. Please visit lyrictheatrevt.org/donate-main to give now. Wishing you days that are merry and bright! – Erin

SPOTLIGHT SHOUT-OUT

By Kerry Farrell

This month the Membership Committee would like to highlight three volunteers who really stepped up to the plate during the run of *Into the Woods*.

First, Andy Pearson for saving the projector twenty minutes before the matinee on Saturday and then again when he climbed up and replugged the second rail of lights when they stopped working during the Saturday night show. He received a golden wing nut award, which is given to a volunteer who saves the day, for his quick ability to problem solve and remain calm under a stressful situation.

Second, Laurie Dana, head costume dresser, quickly found herself without the costume designer and the costume construction chair due to COVID. She, with the help of many costume volunteers, was able to adjust and manage the costume repairs, quick changes, and many other issues that arise during a run.

Last, but not least, Kelley Lane, for leading the makeup crew when the makeup designer came down sick. Kelley went above and beyond without even a moment of hesitation to oversee the makeup crew and ensure the cast looked good.



JOIN US FOR HOLIDAY CAROLING ON THE CHURCH STREET MARKETPLACE

It is a chance for any and all Lyric members to sing their hearts out! Caroling begins at 2:00 p.m. on Sunday, December 18. Meet in front of the Mall entrance on Church Street. Reach out to Kerry Farrell, Membership Chair, for any questions or more information at kkfrn3@gmail.com.

SEEKING PROPOSALS FOR THEATER FOR YOUNG AUDIENCES (TYA) FOR SUMMER 2023

By Jennifer Warwick

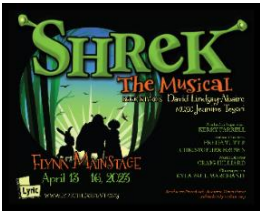
The Production Selection and Evaluation committee is seeking TYA Proposals for summer 2023. *A Year with Frog and Toad* and last summer's *Ivy + Bean* were huge hits, and we would like to continue the tradition. This is a great way to get some artistic team experience and there are so many fun options to choose from: *Chitty Chitty Bang Bang*, *Anne of Green Gables*, *Curious George*, *Madagascar*, *A Musical Adventure*, *Junie B Jones the Musical* and many more. Proposal deadline is March 4, 2023. For more information, please contact Jennifer Warwick, Chair of the Production Selection Committee, jenw.sokol@gmail.com, or Erin Evarts, erin@lyrictheatrevt.org.

SHREK THE MUSICAL WELCOMES NEW TEAM MEMBERS

By Kerry Farrell

Since our last production meeting we have added a few new members to the Production Team. We welcome these folks to the Swamp:

Stage Manager: Becky Millard
 Assistant Stage Manager: Todd Hanley
 Co-Set Construction Chair: Curt Curtis
 Co-Set Construction Chair: Len Rubin
 Set Decoration Chair: Cathie Covey



MORE MUSINGS FROM THE SWAMP

Your monthly *Spotlight* update on our Spring 2023 Mainstage production of *Shrek*
By **Hannah Normandeau and Alex Shevrin Venet**

Are you ready for your time to shine on the Flynn Stage? Auditions for our next mainstage show, *Shrek the Musical*, are coming up from January 8 to 12 at the Lyric Creative Space. Read on for more information about the audition process, and an invitation to Kick-Off on Wednesday, January 4.

What types of roles are there?

The cast of characters in *Shrek the Musical* include:

- Shrek: the terrifying ogre with a soulful, lonely heart
- Donkey: a talking donkey who joins Shrek on his epic adventure
- Fiona: a smart, outspoken princess who can't help burping or launching into hand-to-hand combat when needed. Fiona transforms into an ogre every night when the sun sets
- Lord Farquaad: a pompous, power-hungry little villain with a raging Napoleon complex and intense dislike of all fairytale creatures
- Dragon: a dragon that has been charged with guarding Princess Fiona in her isolated castle
- Young Fiona, Teen Fiona, and Young Shrek: younger versions of these characters. Actors may also double in other roles in the ensemble
- Fairytale creatures: a motley crew of familiar fantasy characters. They were banished from the kingdom of Duloc by Lord Farquaad to Shrek's swamp. They help bring the story to life. Among the fairy tale creatures include these specific roles: Pinocchio, Sugar Plum Fairy, Wicked Witch. Ensemble roles include guards, knights, villagers, the King and Queen of Duloc and many fun fairytale creatures. The whole cast will be busy throughout the show making the story come alive!

For more detail including full descriptions, vocal ranges, stage ages, and dance skills required, visit <https://lyrictheatrevt.org/shrek/>

What is required at auditions?

At auditions, you will participate in a movement workshop, sing a vocal selection, and perform a reading. All audition materials can be found on the Lyric website so you can prepare for your audition.

Who can audition?

Anyone! There are roles in this show for ages 8 to 80+, for people of all genders and abilities, for people who are experienced actors and those new to the stage. Who can audition? YOU!

(Note: To audition for a role in *Shrek*, you must be 8 years old as of Sunday, January 8, 2023, and have a believable stage age of at least 7 years old.)

How do I learn more or sign up?

Visit <https://lyrictheatrevt.org/shrek/> to learn more and download forms and audition materials, and join us at the Lyric Creative Space on Wednesday, January 4, at 7:00 p.m. for the Kick-Off event for *Shrek*! Kick-Off is an informational and celebratory evening where you'll hear from members of the *Shrek* creative team, meet other volunteers, and sign up for audition and volunteer crews.

ON OTHER STAGES

- ★ Northern Stage presents *The Railway Children*, November 22-January 1, at the Barrette Center for the Arts. Tickets/info: northernstage.org
- ★ Valley Players present *It's a Wonderful Life: A Live Radio Play*, December 2-11. Tickets/info: valleyplayers.com
- ★ Very Merry Theatre presents *The Addams Family*, December 9 and 10; and *Oklahoma!*, December 16 and 17, at the O.N.E. Community Center. Tickets/info: verymerrytheatre.org
- ★ Vermont Symphony Orchestra and Lyric Theatre team up for a *Holiday Pops Concert* at the Flynn on Saturday, December 10, at 7:30 p.m. Tickets/info: vso.org
- ★ Vermont Stage presents *Winter Tales*, December 14-18, at the Main Street Landing Performing Arts Center. Tickets/info: vermontstage.org
- ★ Lost Nation Theater presents *A Christmas Carol* performed by Willem Lange, December 16, at Montpelier's City Hall. Tickets/info: lostnationtheater.org
- ★ The Flynn Center's Broadway lineup for the upcoming season includes *Anastasia*, January 22 and 23; *The Book of Mormon*, February 28, March 1 and 2; and *Stomp*, April 23. Tickets/info: flynnvt.org

WINTER WORD SEARCH



COLD	FREEZING	GLOVES
HAT	SCARF	SNOW
SNOWFLAKE	SOCKS	WARM



7 Green Tree Drive
South Burlington, VT 05403

The Spotlight: A monthly publication of Lyric Theatre Company. To submit material for the next issue, email boerap@champlain.edu. Distribution questions? Call 802-658-1484.

Deadline for January issue: December 28, 2022

Countdown to Kick-Off!

AT YOUR SERVICE—LYRIC THEATRE COMPANY BOARD & STAFF

Kerry Farrell	kkfrn3@gmail.com
Cheri Forsythe	forsythecheri@gmail.com
John Gravel	
Kylie Halpin	halpinkylie@gmail.com
Howard Kalfus	hkalfus@comcast.net
Steve Kendall	stepkend@comcast.net
Mary Margaret Lee	MaryMLVT@gmail.com
Serena Magnan O'Connell	serenamagnan@hotmail.com
Vonnie Murad	
Andy Pearson	apearson@sbschools.net
Rebecca Raskin	rebeccaraskin@msn.com
Hillary Read	hbread@gmail.com
Nate Venet	natevenet@gmail.com
Jennifer Warwick	jenw.sokol@gmail.com
Dorothy Wright	
Erin Evarts, <i>Executive Director</i>	erin@lyrictheatrevt.org
Doris O'Brien, <i>Bookkeeper</i>	doris@lyrictheatrevt.org
Ryan Addario, <i>Dir. of Comms & Development</i>	office@lyrictheatrevt.org

Lyric Office Address: 7 Green Tree Drive, South Burlington, VT 05403

MEETING TIMES FOR LYRIC'S STANDING COMMITTEES

Board (Chair: Serena Magnan O'Connell): 3rd Tuesday of the month, 6:30 p.m., Lyric Creative Space
Facilities (Chair: Cheri Forsythe): 1st Monday of the month, 6:00 p.m., Lyric Creative Space
PR/Development (Chair: Kylie Halpin): 1st Wednesday of the month, 6:00 p.m., Lyric Creative Space
Education (Chair: Vonnie Murad): 2nd Tuesday of the month, 6:00 p.m., Lyric Creative Space
Finance (Chair: Stephen Kendall): 2nd Friday of the month, 12:00 p.m., Lyric Creative Space
Membership (Chair: Kerry Farrell): 4th Tuesday of the month, 7:00 p.m., home of Kerry Farrell, 19 Pheasant Way, South Burlington
Production Selection (Chair: Jennifer Warwick): 4th Wednesday of the month, 6:30 p.m., Lyric Creative Space
Outreach & Inclusivity (Chair: Howard Kalfus): 2nd Thursday of the month, 6:00 p.m., Lyric Creative Space

Thanks to our Season Sponsor



April 13-16, 2023
Flynn Center MainStage
Burlington, VT

Generous support from

