

EXECUTIVE DIRECTOR'S MESSAGE

By Erin Evarts

The shades of green on Green Tree Drive have started to turn into oranges and reds, just as our warehouse is beginning to look more like the pages of a storybook than a British schoolhouse. Our volunteers are hard at work preparing to take our community *Into the Woods* in less than six weeks, while our *Shrek* team is on deck, already filling up the bog for our spring Main Stage production. Get your tickets now for both shows via flynnvt.org! Please join in the fun and take a look at the drop-in hours to lend a hand to our crews during this final push. Another great way to support Lyric's work, is to reach out if you would like to purchase ad space in either program for our 49th Season.

Finally, as we approach the colder months and flu season, we want to remind you about the new booster available to help protect our community against COVID-19. Our policies have not changed, and we encourage you to stay healthy, and up to date on all your vaccines so you don't miss out on any of Lyric's offerings!

Happy Fall,
Erin

P.S. – Stay tuned in the coming days for a Lyric announcement about an exciting holiday venture we will take part in alongside the VSO.



OPTIONS FOR SPRING 2024 BLOCKBUSTER SHOW EXPANDED!

By Jennifer Warwick

We are fast approaching Lyric's 50th season and the Production Selection Committee is looking for a blockbuster show for Spring 2024! The list of blockbusters that we would like to see in this slot are chosen by Lyric members, audiences, and the Production Selection Committee. They are the following: *The Wizard of Oz*, *Beauty and the Beast*, or *The Sound of Music*.

Not enough for you? We have now expanded the list to include *Kinky Boots*, *The Little Mermaid*, *Cinderella*, *Grease*, *Fiddler on the Roof*, *West Side Story*, or *Singin' in the Rain*.

We are seeking core team members initially (Production Supervisor, Director, Musical Director, and Choreographer, noting that the Production Supervisor and Director should have mainstage team experience or the equivalent). Please contact Erin Evarts at erin@lyrictheatrevt.org for guidance and information. We can help you through the entire process. Deadline for Spring 2024 proposal submissions will be November 30, 2022. Let us show Vermont how theater is done!

SPOTLIGHT SHOUT-OUT

By Serena Magnan O'Connell

This month the Membership Committee would like to highlight the volunteer efforts of two individuals who took on the impressive effort of taping out the entire fixed set of *Into the Woods* for our rehearsals. For those who have seen the complex set design, it is nothing short of a taping nightmare with all of the steps, ramps, and nuances ...not only that, but placing it on the appropriate angle in the Marjorie Howe Rehearsal Space complicates it even further. Without hesitation, Tom Dunn came in to assist Cat Meyers in the task, executing it without flaw. The team of *ITW* is extremely grateful for going above and beyond to get this done and for that, we'd like to give you a Spotlight Shout-out Tom and Cat! Well done!


Lyric Theatre Company

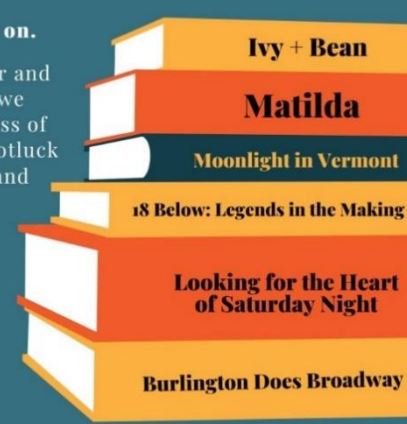
Annual Meeting

Sunday | October 9, 2022
Saint John's Club in Burlington
Arrivals at 5:30 pm | Meeting at 6:30 pm

The show really does go on.

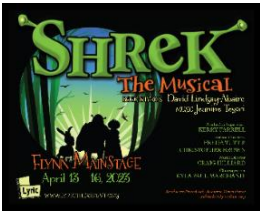
Help us close one chapter and look toward the next, as we celebrate the great success of our 48th Season with a potluck dinner, cash bar, raffle, and more!





- Ivy + Bean
- Matilda
- Moonlight in Vermont
- 18 Below: Legends in the Making
- Looking for the Heart of Saturday Night
- Burlington Does Broadway

RSVP to lyriemembership@gmail.com



MORE MUSINGS FROM THE SWAMP

Your monthly *Spotlight* update
on our Spring 2023 Mainstage
production of *Shrek*
By Hannah Normandeau

We're back with another round of team member highlights! This month we're featuring some fabulous women who really know what it takes behind the scenes to make Lyric magic. One will enhance and sculpt hair and skin magic (and turn some of the cast gloriously green!), one will capture gorgeous images of this dynamic production to last a lifetime, one will get the gear you need to stay fashionable while promoting (and then remembering) this incredible production, and one will create the real-life storybook that tells the audience the stories behind the show.

Linda Fleury: Makeup/Hair Design

I've always wanted to create hair designs for Hollywood or Broadway early in my career, but life kept me here in Vermont to raise my family. In learning about Lyric Theatre about 11 years ago, I realized 'Broadway' was in my own backyard of Burlington! So, I connected and with my first show, *Titanic the Musical*; I was totally in awe! I was struck with how all the behind-the-scenes choreography generated a buzz of energy. I was thrown into helping the hair team create vintage hairstyles, putting on wigs, and learning about "quick changes." It was fast-paced, creative, challenging and something I knew would be a lifelong journey.

I relate to Shrek's story because I was that person ... that plain shy girl who lurked in the shadows of the popular pretty girls, wishing I would be noticed, or had better clothes to "fit in," or the courage to have a voice in sharing my thoughts and dreams. I felt cocooned. But through those experiences, finding the courage to take risks, allowed me to spread my butterfly wings to where I am today.

I learned a lot from my Lyric mentors, Ron Cook and Jennifer Honeywood, who had been with Lyric for over 25 years! They were a huge part of perfecting my theater craft and encouraging me to take on the role of Hair Chair for future shows.

Since *Titanic*, I assisted in *Rent*, *Les Misérables*, *White Christmas*, *Mary Poppins*, *The Who's Tommy*, *A Christmas Story*; served as Hair Chair for *Oliver*, *The Producers*, *Dirty Rotten Scoundrels*, *Annie*, and *Mamma Mia*; and was Hair and Makeup Designer for *The Addams Family*, *Matilda the Musical*, *Ivy & Bean*, and now *Shrek the Musical*.

Pamela Jacobs (aka Pam J aka PPJ): Promotional Wear

My first show was *White Christmas*, fall 2015. So happy to be reuniting with WC friends Hannah and Sarah Wright, and all of us in new roles.

White Christmas was my first show ever. I had no experience in high school or college. I loved the movie,

and my childhood friend Amy J.S. was the "Prop Tarts" Chair. It was kismet. Working on the props table backstage was a blast.

Can I be honest? I've never seen *Shrek*, the movie or the musical. However, I have worked with Kerry Farrell in the costume shop for three shows (four if you count both *Matilda* and *Matilda 2.0*.) I love the Costume Goddesses! Kerry is so inclusive and finds something for everyone to do, no matter what their skill level. It was such an honor when she asked me to be part of the *Shrek* team doing Promo Wear! This is how I relate to Shrek — and the fact green is my favorite color.

Jenn Adams: Photographer

I joined Lyric Theatre back in 2000 as a nurse in *South Pacific*. As a heart-led photographer, I focus on authenticity in my subjects. We can be loved for who we are if we allow ourselves to be, and I love this theme in the show. Lyric truly is a family for so many. No matter how long we wander in living life, coming back is always a joyful homecoming.

Pat Boera: Program Chair

A call for volunteers from the mother of a student who lived in my residence hall at UVM provided my introduction to Lyric Theatre Company. Lyric's first show – *How to Succeed in Business Without Really Trying* – needed ushers and I signed up. The rest is history. Over time, I have been involved in many areas of production – Auditions, House, Costumes, Dresser, Opening Night Party, Program, Promotions, and Audio Description. I edit Lyric's monthly *Spotlight* newsletter; served several terms on the Board; and currently support Lyric's PR/Development Committee.

I was delighted when Freda reached out to invite me to be part of the *Shrek* team. Having recently re-watched the DreamWorks movie, which predated the stage production, I was reminded that the characters reflect real human traits and relationships, especially friendship. Some of my most cherished friends are fellow Lyric volunteers. Our common love of all-things theater keeps us connected (even during challenging times like Covid), and the "journey" we embark on as each show moves from the proposal stage to a glorious full-scale production at the Flynn is something pretty darn magical.

SUNSHINE COMMITTEE REQUEST By Rob Parzych

Greetings friends. If you would like to share a milestone, I'd like to hear from you. The Sunshine Committee (me) would like to highlight life events. In addition to sending sympathy cards, I'd like to know about the following: birth announcements, weddings, anniversaries, birthdays, moving, graduation, promotion – all are good occasions to highlight and report to our membership. Please email me: r_p67@yahoo.com I look forward to hearing from you!

CALL FOR VOLUNTEERS FOR INTO THE WOODS

Into the Woods is seeking volunteers for various crews and someone to plan our parties! Crew meeting times appear below. If you want to serve as our party coordinator please contact Serena Magnan O'Connell, serenamagnan@hotmail.com. See you at the Creative Space!

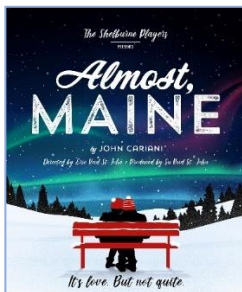
Set Construction: Saturday from 9:00 a.m.-Noon; Monday, Tuesday, and Wednesday, 6:30-9:30 p.m.
Contact: Bruce Cowan, cowanbm@ieee.org

Set Decoration/Painting: Thursday and Friday, 6:00-9:00 p.m., Sunday, 1:00-4:00 p.m. Contact: Cathie Covey, cath_717@yahoo.com

Props: Thursday, 6:30-9:00 p.m.; Sunday, 10:00 a.m.-1:00 p.m. Contact: Lesley Graham: 413-884-4371 or lagprops@outlook.com

Costumes: Tuesday, 9:00 a.m.-Noon; Wednesday and Thursday, 6:30-8:30 p.m.; Sunday, 1:00-4:00 p.m.
Contact: Kerry Farrell and Leah Burke, lyriccostumegoddesses@gmail.com

Crews work at Lyric's Creative Space, 7 Green Tree Drive, South Burlington. Park around the back of the building and enter through the red door. No experience required, and you are not expected to be at every work session – just the days that are convenient for you. We hope you can volunteer to help.



SHELBURNE PLAYERS PRESENT *ALMOST, MAINE*

Welcome to *Almost, Maine*, a town that's so far north, it's almost not in the United States – it's almost in Canada. One cold, clear Friday night in the middle of winter, while the Northern Lights hover in the sky above, *Almost's* residents find themselves falling in and out of love in the strangest ways. Knees are bruised. Hearts are broken. Love is lost, found, and confounded. And life for the people of *Almost, Maine*, will never be the same.

Performance dates at Shelburne Town Center:

- Friday, October 7, 7:00 p.m.
- Saturday, October 8, 7:00 p.m.
- Sunday, October 9, 2:00 p.m.
- Friday, October 14, 7:00 p.m.
- Saturday, October 15, 2:00 p.m. (special Saturday matinee!)
- Saturday, October 15, 7:00 p.m.

ON OTHER STAGES

- ★ Vermont Stage presents *The Pitmen Painters*, September 28-October 16. Tickets/info: vermontstage.org
- ★ Lamoille County Players' presents *Blue Window*, September 30-October 2, and October 7-9. Tickets/info: lcplayers.com
- ★ Lost Nation Theater presents *Sondheim Musical Review*, October 6-23. Tickets/info: lostnationtheater.org
- ★ Stowe Theatre Guild presents *A Little Night Music*, October 6-15. Tickets/info: stowetheatre.com
- ★ Shelburne Players present *Almost, Maine*, October 7-9, and 14-15. Tickets/info: shelburneplayers.com
- ★ Essex Community Players present Neil Simon's *Laughter on the 23rd Floor*, October 7-22. Tickets/info: essexplayers.com
- ★ Valley Players present *The Great Gatsby: A Live Radio Play*, October 7-23. Tickets/info: valleyplayers.com
- ★ The Flynn Center's Broadway lineup for the upcoming season includes *Chicago*, October 6; *Anastasia*, January 22 and 23; *The Book of Mormon*, February 28, March 1 and 2; *Legally Blonde the Musical*, November 30; and *Stomp*, April 23. Tickets/info: flynnvt.org
- ★ Girls Nite Out Productions presents *Vanya and Sonia and Masha & Spike*, November 9-13 and 16-19. Tickets/info: girlsniteoutvt.com

To see full listings for upcoming productions statewide, visit theaterengine.com

READING SELECTIONS WITH A NOD TO BROADWAY Excerpted from an article on Playbill.com

Source: <https://www.playbill.com/article/8-theatre-books-to-read-this-winter>

When there's a chill in the air, many of us want to curl up with a good book next to a roaring fire. Here are a few titles to consider:

- *The Ballerina Mindset: How to Protect Your Mental Health While Striving for Excellence* by Megan Fairchild, Principal Dancer at the New York City Ballet
- *Booze Over Broadway: 50 Cocktails for Theatre Lovers* by Michael Groff
- *The Phantom of the Opera* by Cavan Scott, a new graphic novel adaptation
- *Lorraine Hansberry: The Life Behind A Raisin in the Sun* by Charles J. Shields
- *If You Survived 7th Grade, You Can Be an Actor: Applying the Meisner Technique to Get Outta Your Head in Acting and in Life* by Matthew Corozine
- *I Was Better Last Night* by Harvey Fierstein
- *Fearlessly Different: An Autistic Actor's Journey to Broadway's Biggest Stage* by Mickey Rowe
- *Jagged Little Pill: The Novel* by Eric Smith with Alanis Morissette, Diablo Cody, and Glen Ballard





7 Green Tree Drive
South Burlington, VT 05403

The Spotlight: A monthly publication of Lyric Theatre Company. To submit material for the next issue, email boerap@champlain.edu. Distribution questions? Call 802-658-1484.

Deadline for November issue: October 28, 2022

Tickets are on sale NOW for Lyric's 49th season!

AT YOUR SERVICE—LYRIC THEATRE COMPANY BOARD & STAFF

Rachel Bruce Drew	rachelbdrew@gmail.com
Kerry Farrell	kkfrn3@gmail.com
Cheri Forsythe	forsythecheri@gmail.com
Jane Harissis	vitsivan@aol.com
Howard Kalfus	hkalfus@comcast.net
Steve Kendall	stepkend@comcast.net
Mary Margaret Lee	MaryMLVT@gmail.com
Serena Magnan O'Connell	serenamagnan@hotmail.com
Shane McCormack	smccormack@pfclaw.com
MaryBeth Nuovo	mbnuovo@aol.com
Andy Pearson	apearson@sbschools.net
Rebecca Raskin	rebeccaraskin@msn.com
Hillary Read	hbread@gmail.com
Nate Venet	natevenet@gmail.com
Jennifer Warwick	jenw.sokol@gmail.com
Dorothy Wright	
Erin Everts, <i>Executive Director</i>	erin@lyrictheatrevt.org
Doris O'Brien, <i>Bookkeeper</i>	doris@lyrictheatrevt.org
Ryan Addario, <i>Dev. & Marketing Coordinator</i>	office@lyrictheatrevt.org

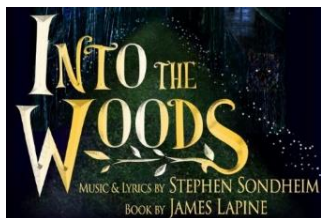
Lyric Office Address: 7 Green Tree Drive, South Burlington, VT 05403

MEETING TIMES FOR LYRIC'S STANDING COMMITTEES

Board (Chair: Nate Venet): 3rd Tuesday of the month, 6:30 p.m., Lyric Creative Space
Facilities (Chair: Cheri Forsythe): 1st Monday of the month, 6:00 p.m., Lyric Creative Space
PR/Development (Chair: Rachel Bruce Drew): 1st Tuesday of the month, 6:00 p.m., Lyric Creative Space
Education (Chair: MaryBeth Nuovo): 2nd Tuesday of the month, 6:00 p.m., Lyric Creative Space
Finance (Chair: Stephen Kendall): 2nd Friday of the month, 12:00 p.m., Lyric Creative Space
Membership (Chair: Serena Magnan O'Connell): 4th Tuesday of the month, 7:00 p.m., home of Serena Magnan O'Connell, Burlington
Production Selection (Chair: Jane Harissis): 4th Wednesday of each month, 6:30 p.m., Lyric Creative Space
Outreach & Inclusivity (Chair: Howard Kalfus): 2nd Thursday of the month, 6:00 p.m., Lyric Creative Space

ORDER YOUR SEASON TICKETS

Tickets are on sale now for Lyric's 49th season! Visit www.flynnvt.org as a Lyric or Flynn member and use the code Lyric49 to get your tickets for *Into the Woods* and *Shrek*. Show dates: *Into the Woods*, November 10-13, 2022; *Shrek*, April 13-16, 2023. Be sure to get your tickets today and we'll see you at the Flynn!



**November 10-13, 2022
Flynn Center MainStage
Burlington, VT**

Generous support from



and PCC