

## SOMETHING'S COMIN', SOMETHING GOOD

*By Jose Rincon, Executive Director*

There is much too look forward to at Lyric Theatre Company! Be sure to mark your calendars for the following events:

*Annie: The Musical*  
November 8–11, 2018  
Flynn Center MainStage

Holiday Caroling  
December 16, 2018  
Church Street Marketplace

*Burlington Does Broadway*  
December 31, 2018  
Flynn Center MainStage

*Mamma Mia!*  
April 11–14, 2019  
Flynn Center MainStage

Tickets for all three Flynn Center MainStage shows are on sale now. Get yours today by going to [flynntix.org](http://flynntix.org) or calling 802-86-FLYNN.

We hope to see you there!

## AWARDS PRESENTED AT ANNUAL MEETING

*By Christopher Brown*

On behalf of the Membership, I would love to share the two major awards we gave out at this year's Annual Meeting on September 16.

### Stanley Greenberg Volunteer of the Year Award: Tomomi Ueda

Kind, dependable, and hardworking are a just few of the words our volunteers use to describe this year's recipient. Whether it is working on the pinrail backstage, working underneath platforming onstage, or bringing in homemade cookies for production week, she embodies the generosity and dedication that have made Lyric Theatre Company what it is today.

She has been volunteering with Lyric Theatre as a talented painter and skilled carpenter for the past 20 years, during which she has worked on 40 different productions. Some of her recent handiwork in *Dirty Rotten Scoundrels* included the rolling scenery in the train windows and the tall cut-out trees. For *A Christmas Story*, she spent every beautiful fall Sunday at the Lyric warehouse helping to bring that production to life, after spending the summer helping move Lyric into our new home. Outside of Lyric, her artwork has been shown in galleries around Vermont.

We are delighted to give the 2017 Stanley Greenberg Volunteer of the Year Award to Tomomi Ueda.

### Lifetime Membership: Syndi Zook

This special award is not one we give out every year—and by no means does it signify the end of their involvement with Lyric. It is meant to honor someone who has put in an enormous amount of time into the organization and has left a distinct impact. Syndi has been a member of Lyric Theatre Company long before her days as Executive Director. Whether on stage performing, guiding the creative process or bringing Lyric to its new home, 'Zook,' as we affectionately know her, brought the organization to a new level.

Syndi's involvement has reached all corners of the organization and much of her work goes unseen to the public or even much of the membership. She has brought in lifelong donors and members, stepped in to direct First Night, guided Anthem Singers and Savvy Seniors, launched us into and continues to see us through our Capital Campaign and represented Lyric to the Vermont Community for years—both on and off stage, in and out of the office. As we transitioned Executive Directors, she graciously and patiently imparted her knowledge and wisdom and continues to be a wonderful support.

For these reasons and many more, we honor Syndi Zook with a Lifetime Membership.

### LYRIC'S ANNIE: LOOKING BACK/LOOKING AHEAD

*By Pat Boera*

*Annie the Musical*, which opens on the Flynn MainStage on Thursday, November 8, marks Lyric's third production of the beloved Broadway musical. The time was right to introduce a new generation to the story of a spirited orphan and her dog Sandy as they search for a forever family.

When Lyric presented *Annie* the first time, it was 1988. Leading the cast were Guilaine Senecal as the title redhead, with the late Al Myers as Oliver "Daddy" Warbucks, and the irrepressible Syndi Zook as Miss Hannigan.

Flash forward ten years and Lyric presented *Annie* again. This time, Abby Wheeler played Annie with Leon Fred as billionaire Oliver Warbucks, and Syndi Zook reprising her role as mistress of the orphanage. Two members of the orphan chorus in the 1998 production were Liana Hunt and Shaina Taub. Liana and Shaina have since found success in the Big Apple. Liana has performed in the Broadway companies of *Mamma Mia!* and *Newsies* while Shaina has composed and starred in three adaptations of Shakespeare plays for The Public Theater's Public Works Program. As a songwriter, she is a winner of the Jonathan Larson Grant and the first female recipient of the ASCAP Foundation's Lucille and Jack Yellen Award.

Our current cast of 35 actors and three canines is amazing. It has been rewarding to occasionally peek in at rehearsals and watch these community professionals honing their craft with expert guidance from artistic director Sara

McDonald, music director Craig Hilliard, Choreographer Kim Nowlan, Stage Manager Sean Leach, and their respective assistants. Fifteen cast members and all three canines are making their Lyric MainStage debut. One cast member—Tim Stetson—is appearing in his third production of *Annie* with Lyric and his fourth overall production of the show. Tim played Daddy Warbucks in the FCTC 2005 production.

I am equally in awe of and eternally grateful to our hardworking production team. They rally when the request goes out for help with costumes, hair, makeup, set pieces, projection images, and props for a photo shoot, video session or TV commercial. Hair Chair Linda Goodhue Fleury hosted Mark Cranmer and Stephanie Miskavage at Paragon Design for an afternoon of hair transformation. Mark shaved his head and Stephanie traded her straight brunette locks for a stylish permed bob in Irish-setter red. Everyone has jumped in to spread the good news about the show on social media or to distribute posters. Community theater volunteers are truly special.

If you have not already done so, get yourself to the Flynn Center Box Office, call 802 86FLYNN, or order your tickets online. You won't want to miss Lyric's fall 2018 production of *Annie*. Bet your bottom dollar, you'll love this show!



Mark Cranmer, "Daddy" Warbucks, and Stephanie Miskavage, *Annie*, at Paragon Design. Photo by Kristin Miskavage

**COSTUME SALE: A BIG SUCCESS**  
*By Pat Boera*

Saturday, September 15, was a beautiful fall day and eager shoppers were lining up even before the official start time for Lyric's Costume Sale. One group even made a trip from Rhode Island to purchase the Mrs. Potts costume from *Beauty and the Beast* as well as other specialty pieces.

A big shout-out to the Costume Goddesses for making the Costume Sale a success. The event was co-chaired by Collette Kaiser and Rita Myers. Rita sent this message to volunteers: "I want to personally thank all of you for today and for making this experience so much fun. You all worked so hard for the past few months."

The results: \$1,180.65 plus the added benefit of increased storage space in the costume loft. Congrats to all involved!



**KEY DATES AND  
MEET THE PRODUCTION TEAM**  
*By Margaret Welch*

**Kick-Off/Information Meeting**

Wednesday, November 28, 2018  
Lyric Theatre Company Creative Space  
7 Green Tree Drive, South Burlington

**Auditions**

Sunday, December 2; Monday, December 3; and  
Tuesday, December 4, 2018  
Faith United Methodist Church  
899 Dorset Street, South Burlington

**Call-Backs**

Thursday, December 6; Friday, December 7, 2018  
Location TBA

**Production Team**

Production Supervisor	Margaret Welch
Director	Mike Fidler
Music Director	Craig Hilliard
Rehearsal Pianist	Nate Venet
Choreographer	Sue Bailey
Stage Manager	Sean Leach
Assistant Stage Manager	Sarah Crowley
Technical Director	Tom Dunn
Costume Designer	Lyn Feinson
Costume Construction	Robin Baker & Margaret Spivak
Hair Design/Co-Chairs	Ron Cook & Jennifer Honeywood
Lighting Designer	Andy Pearson
Make-up Design/Chair	Kelley Lane
Properties Design/Co-Chairs	Donna Riera & Mary Zimmerman
Set Design	Cheri Forsythe
Set Construction Chair	Len Rubin
Set Decoration Chair	Janet Bessmer
Set Engineers	Paul Ledak & Tim Henderson
Sound Design/Engineer	Steve Smith
Box Office	Syndi Zook
Business Manager	Mary Ellen Daniels
House Co-Chairs	Pam Carter & Shirley Sweet
Logo/Graphic Design	Shawn Rice
Parties Chair	Sarah Tischler
Program Chair	Linda Whalen
Promotions	Heather Friedrichsen & Rachel Smith
Promotional Wear	Karyn Dubie & Faith Leach
Safety & Security	George Henry & Bill McSalis

**MARY POPPINS RETURNS WINTER FUNDRAISER**  
*By Pat Boera*

There is a lot of excitement about the movie *Mary Poppins Returns* coming to the big screen in mid-December. The PR/Development Committee is planning a fundraising event aligned with the opening of the movie. Stay tuned for further details.

## WHAT WILL LYRIC'S SPRING 2010 SHOW BE?

By Sean Leach

The Show Selection and Evaluation Committee is seeking proposals for spring 2020. The deadline for show proposals is October 31, 2018. The guidelines are stated below. Please contact Sean Leach, chair of Lyric's Show Selection and Evaluation Committee, at leachs@aol.com for more information and to submit your proposal.

### Main Stage Show Proposal Criteria:

- Has not been produced by Lyric in the past ten years
- Has broad-based audience appeal
- Is appropriate for directors, cast and crew available to Lyric
- Has potential for substantial ticket sales
- Has artistic value

### Written proposals should include:

- Names and qualifications of the Producer, Director, Choreographer and Music Director
- Synopsis of show
- History of the show (where and when it has been performed)
- General vision including cast size and mix, special talent needs and why it should be produced by Lyric Theatre Company
- A preliminary budget (past show budgets are available from the Lyric Office)
- Some general marketing ideas to promote the show

## RAFFLE DURING THE RUN OF ANNIE

By Pat Boera

Lyric member Keith McManis, Director of Sales and Marketing at The Essex, Vermont's Culinary Resort & Spa, has arranged for a wonderful raffle prize. The lucky winner will enjoy one-night's accommodation in a King Culinary Room with cooking class for two and one 50-minute spa treatment, valued at \$550. Tickets will be on sale at the Membership table in the Lobby of the Flynn during the run of *Annie*. Tickets are \$10 each or three for \$20. Proceeds benefit Lyric Theatre Company.

## CAPITAL CAMPAIGN RAFFLE WINNERS ANNOUNCED

By Pat Boera

Lyric member and Costume Goddess Debby Dot Decker is full of creative ideas. During the past few weeks, she showed up at the Annual Meeting as well as at the rehearsal site and Lyric's Creative Space selling tickets to a raffle benefitting the Capital Campaign. We are pleased to announce the winners in this issue of *The Spotlight*:

Walk-on role in the National Tour of *Spamalot*:

Kim Nowlan Hathaway (gifted to Travis Hathaway)

Parking spot in front of the Flynn during a performance of their choice:

Cheri Forsythe (2) and Heidi Racht

Lindt Chocolates Gift Basket:

Collette Kaiser

The raffle raised over \$500 toward the Capital Campaign and we extend heartfelt thanks to Debby Dot for her efforts.

## ON OTHER STAGES

★ Vermont Stage presents *The Curious Incident of the Dog in the Night-time*, October 3-28. Tickets/info: vermontstage.org

★ Lost Nation Theater presents Howard Frank Moser's *Disappearances*, October 4-21. Tickets/info: lostnationtheater.org

★ The Flynn Center's Broadway series includes *Rock of Ages*, October 18; *Spamalot*, October 22; Lyric's *Annie*, November 8-11; *Elf*, November 14 and 15; and *Something Rotten*, November 29. Tickets/info: flynncenter.org

★ Lamoille County Players present *The Cripple of Inishmaan*, November 2-4 and 9-11. Tickets/info: lcplayers.com

★ Champlain Valley Union High School presents *Legally Blonde*, October 26 and 27 at 7:30 p.m. and October 28 at 2:00 p.m. Tickets/info: ticketsource.us/cvutheatre

★ Colchester High School presents *The 25<sup>th</sup> Annual Putnam County Spelling Bee*, November 8, 9 and 10 at 7:00 p.m. and November 10 at 2:00 p.m. Tickets/info: victor.toman@colchestersd.org

★ Burlington High School presents *The Little Mermaid*, November 15-17 including a 2:00 p.m. matinee on Saturday. Little Mermainia Family Fun Fair, Noon-1:30 p.m. before the matinee. Tickets/info: BHSVTDrama@gmail.com or purchase at the door.

★ South Burlington High School presents *Man of La Mancha*, November 15-17. Tickets/info:

★ Vergennes Union High School presents *Anything Goes*, November 15-17. Tickets/info: At VUHS and at Everywear for Everybody in Vergennes

★ Neat, with a Twist presents *Coming Home*, October 27, at ArtsRiot; *Merry Twistas*, December 8, at ArtsRiot, and *Ladies Who Laugh & The Logger*, December 28, at Stowe Town Hall. Info: facebook.com/NeatWithATwist/

## THE NAMES AND FACES OF ANNIE COURTESY OF THE PAPER MILL PLAYHOUSE STUDY GUIDE

*Annie* contains references to people from the 1930s. Just as in the comic strip, the Annie of the show interacts with real world figures and these colorful characters give the show a sense of place.

Herbert Hoover was President of the United States from 1928 to 1932. Franklin Roosevelt became President in 1932 and addressed the American public in radio speeches which he called "Fireside Chats." Jack Dempsey was the U.S. Heavyweight Boxing Champion from 1921 to 1926. Ma Perkins/Helen Trent were characters in popular radio soap operas which broadcast in daily installments. Walter Winchell was a newspaper columnist and radio broadcaster who reported on celebrities and politicians. Bernard Baruch was a U.S. financier and government advisor who gained his wealth in the stock market. Justice Louis Dembitz Brandeis was Associate Justice of the Supreme Court from 1915 to 1939. John Dillinger and Baby Face Nelson were notorious gangsters of the 1930s. J. Edgar Hoover was the first Director of the FBI. Jimmy Walker, who was only 5'2" tall, was Mayor of New York during the 1930s.



**P.O. Box 1688  
Williston, VT 05495**



**MAMMA  
MIA!**

**Countdown to Opening Night for Annie  
Tickets on sale now for Mamma Mia!**

Postage  
here

**The Spotlight:** A monthly publication of Lyric Theatre Company. To submit material for the next issue, email boerap@champlain.edu. Distribution questions? Call 802-658-1484.

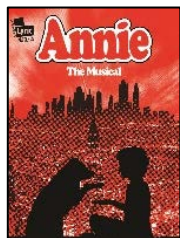
**Deadline for November issue: October 28, 2018**

**AT YOUR SERVICE—LYRIC THEATRE COMPANY BOARD & STAFF**

Christopher Brown  
Andrea Cronan  
Tom Dunn  
Kathy Grise  
Tim Henderson  
Sean Leach  
Mary M. Lee  
Shane McCormack  
MaryBeth Nuovo  
Annie Ode  
Andy Pearson  
Roz Saunders  
Karen Sheedy  
Doug Viehmann  
Margaret Welch  
Jose Rincon, *Executive Director*  
Doris O'Brien, *Bookkeeper*  
Alise Certa, *Administrative Assistant*  
Kristina McSalis, *Campaign Assistant*

christopherbrownvt@gmail.com  
andreacronan@hotmail.com  
tedunn@comcast.net  
kgrise@comcast.net  
zeyde88@gmail.com  
leachs@aol.com  
MaryMLVT@gmail.com  
smccormack@pfclaw.com  
mbnuovo@aol.com  
ode.annie@gmail.com  
apearson@sbschools.net  
rzsanders@yahoo.com  
kos@jmmcpa.net  
avidvi@msn.com  
tapwelch@aol.com  
jose@lyrictheatrevt.org  
doris@lyrictheatrevt.org  
office@lyrictheatrevt.org  
kristina@lyrictheatrevt.org

**MEETING TIMES FOR LYRIC'S STANDING COMMITTEES**  
**Board (Chair: Rosalind Saunders):** 3rd Tuesday of the month, 6:30 p.m., Lyric Office, 7 Green Tree Dr., South Burlington  
**Facilities (Chair: Doug Viehmann):** 1st Monday of the month, 6:00 p.m., Lyric Office, 7 Green Tree Dr., South Burlington  
**PR/Development (Chair: Annie Ode):** 1st Tuesday of the month, 6:00 p.m., Lyric Office, 7 Green Tree Dr., South Burlington  
**Education (Chair: MaryBeth Nuovo):** 2nd Tuesday of the month, 6:00 p.m., Lyric Office, 7 Green Tree Dr., South Burlington  
**Finance (Chair: Karen Sheedy):** Meeting details TBA  
**Membership (Chair: Christopher Brown):** 4th Tuesday of the month, 7:00 p.m., home of the O'Connell's, Burlington  
**Show Selection (Chair: Sean Leach):** Monthly, Time TBA, Location varies  
**Technology (Chair: Andy Pearson):** 3rd Thursday of the month, 6:00 p.m., Lyric Office, 7 Green Tree Dr., South Burlington



**November 8-11, 2018  
Flynn Center MainStage  
Burlington, VT**



Samwise Gamgee Hathaway as Sandy and Stephanie Miskavage as Annie | Stephen Mease Photography