

## JUNE MAKES THE BAY LOOK BRIGHT AND BLUE

*By Jose Rincon, Executive Director*

Whether it's being out on the lake, up in the mountains, or downtown on Church Street, I hope everyone is enjoying our hard-earned summer. These precious months seem to go by faster and faster every year, so here is a reminder of some important Lyric happenings between now and the fall:

- June 30: End of Lyric's fiscal year—Don't forget to send in those annual fund donations!
- July 16-20: LyricKids Summer Camps Week 1—Disney's *Aladdin* KIDS!
- July 23-27: LyricKids Summer Camps Week 2—*Willy Wonka* KIDS!
- August 3: Lyric Night at the Vermont Lake Monsters—Princesses and Superheroes theme!
- August 16: Kickoff meeting for *Annie*!
- August 19: *Annie* auditions: Orphan Girls
- August 21-23: *Annie* auditions: Adult roles

For more information about any of these upcoming events, please contact the Lyric office at 802-658-1484 or [office@lyrictheatrevt.org](mailto:office@lyrictheatrevt.org). We hope to see you there!

## BEHIND THE "CURTAIN"

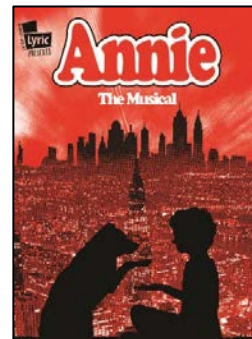
*By Rosalind Saunders, Board Chair*

I like to take every chance I get to thank and promote the dedicated volunteers serving on Lyric's Board and committees. Some of the organization's work is highly visible, such as the LyricKids camps or annual meeting. But, most of the activity is *way* behind the scenes. Lyric's Board and committees—Membership, Education, Finance, Show Selection, Facilities, Technology, PR/Development, Capital Campaign, Executive, and Nominating—put in countless hours each year running the "business of show" (as Steve Kendall likes to say). It takes a village to put on a Lyric show and it takes a village to support the year-round work of Lyric. I am truly grateful for all of our volunteers, and I want to let everyone know we are always looking to welcome new people. If you are interested in learning more about serving on a committee or the board, please email me at [rzsanders@yahoo.com](mailto:rzsanders@yahoo.com).

## SAVE THE DATE FOR LYRIC'S 2018 ANNUAL MEETING!

*By Christopher Brown, Membership Committee Chairperson*

The next Lyric Theatre Annual Meeting will take place Sunday, September 16, at the Eagles Club on Shelburne Road. A formal invite with more details will follow. Join us as we celebrate a successful 44<sup>th</sup> season and hear about exciting plans for the coming year!



### KEY DATES

- Kick-Off:** August 16, 2018, 7:00 p.m.  
*At University Mall, 155 Dorset Street, South Burlington*
- Auditions:** August 19-25, 2018
- Auditions for Orphan Girls:** Sunday, August 19, 2018
- Orphan Call-backs:** August 20, 2018
- Auditions for Adult Roles:** August 21, 22, 23, 2018
- Adult Call-backs:** August 24, 2018  
*At Fusion802, 1881 Williston Road, South Burlington*

### PRODUCTION TEAM

Production Supervisor	Julianne Nickerson
Assistant Production Supervisor-Tech	Lesley Graham
Artistic Director	Sara McDonald
Assistant Artistic Director	Belinda Emerson
Music Director	Craig Hilliard
Choreographer	Kim Nowlan Hathaway
Assistant to the Artistic Director	Ian Ferris
Vocal Coach	Meg Beaucage
Stage Manager	Sean Leach
Assistant Stage Manager	Merrill Cameron
Costume Design/Chair	Dawn Dudley
Costume Construction Chair	Kim Steinfeld
Hair Design/Chair	Linda Goodhue Fleury
Lighting Design	Rory Craib
Makeup Design/Chair	Kelley Lane
Properties Design/Chair	Amy Stetson
Set Construction Co-Chairs	Bruce Cowan, Paul Ledak
Set Decoration Co-Chairs	Cathie Covey, Janet Bessmer
Set Design	Jane Harissis
Set Engineer/Production Carpenter-Lead	Doug Viehmann
Sound Design/Engineer	Harry Chaikin
Special Effects-Projection	Tom Dunn
Special Effects-Videography	Jamie LeClaire
Box Office	Joann Stanfield
House Co-Chairs	Elizabeth Wilkins, Heidi Racht
Photographer	Steve Mease
Program Chair	Linda Whalen
Promotional Art	Shawn Rice
Promotional Wear	Karyn Dubie
Promotions	Pat Boera
Safety & Security Co-Chairs	George Henry, Bill McSalis

## A GREAT WAY TO MAKE A GIFT TO LYRIC!

*By Nanette Stevens*

Lyric Family: Are you at least age 70½? Do you have an IRA? You may make a tax-free gift from your Individual Retirement Account.

- You may transfer up to \$100,000 per person in a calendar year.
- Your gift will count toward your annual required minimum distribution.
- Your plan administrator must transfer the funds directly to the Non-Profit.
- The funds are due by December 31 to reap the tax benefits for the year in which you make the gift.

An IRA Charitable Distribution is a great way to meet your philanthropic goals!

### Qualified Charitable Distributions (QCDs)

Using a QCD is a tax-savvy strategy that allows you to transfer up to \$100,000 per year from your IRA directly to a qualified charity. It is only available to IRAs and individuals who have reached RMD age (70.5). Any amount processed as a QCD counts toward your RMD requirement and reduces the taxable amount of your IRA distribution. This lowers both your adjusted gross income and taxable income, resulting in a lower overall tax liability.

So, if a 70-year-old couple, who have an annual RMD between the two of them of \$24,000, can instead direct \$10,000 of it to charity as a QCD, it will reduce their taxable income by \$10,000 and they still get to claim the standard deduction. As you can see, there is good reason to perform a QCD if you plan to take the standard deduction in 2018, which is why this strategy will likely become commonplace in 2018.

### Tax Return Considerations for QCDs

Currently, your IRA custodian is not required to specially identify the QCD on your annual 1099-R form. Because of that, the responsibility is on you to inform your tax preparer that you performed a QCD. If you don't let your preparer know, they will likely report this transaction as fully taxable, which would negate the benefit of your smart planning.

There is no charitable deduction because that would be double-dipping, but the exclusion from income lowers AGI. That can trigger tax savings in many other income-based areas, such as itemized deductions, personal exemptions, property tax rebates and even cutting Medicare premiums and the tax on Social Security benefits.

### SPOTLIGHT SHOUT-OUT

*By Lyric Board of Directors*

A huge shout-out and thank you to Sean Leach. Sean has done his due diligence as chairperson of Lyric's Show Selection and Evaluation Committee in finding a show and a team for spring 2019. Despite the double set-back of not being given the rights (even after appealing each decision) to *Cinderella* and *Spamalot*, he persevered through it all and we are excited to produce *Mamma Mia* next spring. His passion for Lyric's mission and dedication to the organization is an inspiration to us all!

## MATH IS HARD... DONATING IS EASY

*By Rob Parzych, Capital Campaign Chairperson*

I was doing some quick calculating the other day. The Capital Campaign, to date, has received donations from approximately 1,100 individuals, businesses, trusts and corporations. Large donations are a true blessing, but securing them poses challenges. We have been so fortunate that through the generosity of our past contributors, the tenacity of the Committee and Board, we have been able to secure just over 80% of our goal—quite an achievement. It is beyond exciting that most functions of Lyric are now in full operation at the Creative Space. However, the lack of a completed Rehearsal Hall forces Lyric to continue to rent outside spaces, which are a drain on resources—not to mention morale and productivity, as casts and work crews have historically been separated.

The Campaign Committee is hard at work soliciting donations from various sources. I would like to invite the Lyric membership...the Lyric FAMILY make an investment in Lyric's future.

One time, or monthly gifts, are quickly and securely processed on the Lyric website via PayPal, utilizing the DONATE button at the bottom of the page. Be sure to include a notation that your donation is for the Capital Campaign in the Special Instructions section. Otherwise, donations are flagged as Annual Gifts. You, of course, can contact the Lyric office or speak with Jose directly to set up other types of giving that are best for you.

My point is this: By helping to finalize this last stretch of the campaign, you will know that you, without question, helped cement your place in Lyric's history. Please consider a gift to the Capital Campaign today. To have our rehearsal space under that same roof as everything else in the Creative Space will truly be a dream come true and a resource for the entire community. My most sincere thanks to all of you.

### SPRING 2019 SHOW ANNOUNCEMENT

*By Sean Leach*

We recently learned that, due to an upcoming national tour, we will not be given the rights to *Spamalot* for spring 2019. Once we learned of this, an appeal was filed. The team that was going to do *Spamalot* then began looking at alternative shows at the same time the rights for *Mamma Mia* became available. That same team was very interested in *Mamma Mia*. We immediately applied for and received the rights to the show. Both the Show Selection Committee and the Board have approved and are happy to announce that Lyric's spring 2019 show will be *Mamma Mia*! Auditions for *Mamma Mia* will be held in December 2018.

### The artistic team includes:

Producer: Margaret Welch

Director: Mike Fidler

Music Director: Craig Hilliard

Choreographer: Sue Bailey

Stage Manager: Sean Leach

# VERMONT FEDERAL CREDIT UNION

## VERMONT FEDERAL CREDIT UNION JOINS LYRIC AS A SPONSOR FOR ANNIE!

*By Lori Crowley*

Vermont Federal is a \$500 million-plus financial institution, with six locations currently serving over 38,000 members. Members are part of a cooperative, sharing ownership in the Credit Union. Vermont Federal Credit Union is committed to supporting the communities it serves, through arts organizations such as Lyric Theatre, and to making a decided difference in the lives of its members and other Vermonters. For more information about Vermont Federal Credit Union, call (888) 252-0202, visit [www.vermontfederal.org](http://www.vermontfederal.org), or find them on Facebook.

## DELANO NULTY AWARD WINNER ANNOUNCED

*By MaryBeth Nuovo*

The Lyric Theatre Education Committee is thrilled to present the Delano Nulty Award to Shea Dunlop of Hinesburg. This award of \$1000 supports Vermont students who are pursuing Educational and/or career goals that relate to the performing arts (theatre, music, dance or technical theatre). Shea impressed the committee with her vast experience and evident dedication to the art of musical theater. This past October, Shea starred in Vermont Stage's production of *Fun Home*. And for years she has participated in numerous school and community productions, has studied at the Circle in the Square in New York City, and was State Champion at the Vermont State Forensics Tournament for Dramatic Interpretation. Next year she will be studying musical theater at The Hartt School at the University of Hartford. Congratulations, Shea!

## LYRIC AND THE VERMONT LAKE MONSTERS

*By Jose Rincon*

Take me out to the ballgame! We are excited to once again be participating in the Vermont Lake Monsters "May Days" fundraiser. Friday, August 3rd, will be Lyric Theatre day at Centennial Field as the Lake Monsters take on the Hudson Valley Renegades. Our Anthem Singers will be on hand to start the evening off on a high note (get it?) so mark your calendars and join us for some summertime fun in support of Lyric!

## FESTIVAL ON-THE-GREEN CELEBRATES 40TH SEASON

*By Pat Boera*

Looking for a pleasant diversion for a summer afternoon or evening? Head south on Route 7 to Middlebury for the 40th Annual Middlebury Summer Festival on-the-Green. This free, family-friendly music series will be presented under the big white tent on the Middlebury Village Green during the week of July 8 through 14. For the line-up of this year's performers, go to [www.festivalonthegreen.org](http://www.festivalonthegreen.org).

## JOIN US FOR OUR LYRIC KIDS SHOWS!

*By Jose Rincon*

Each of our 2018 LyricKids summer camp shows will feature over twenty young actors singing, dancing and bringing these classic stories to life. The performances are free to attend with a small reception to follow. Huge thanks to The Redduds Foundation and Physician's Computer Company for supporting our LyricKids!



**Disney's Aladdin KIDS**  
Friday, July 20, 3:00 p.m.



**Willy Wonka KIDS**  
Friday, July 27, 3:00 p.m.

### Both performances held at:

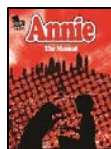
Southwick Music Hall UVM  
392 South Prospect Street  
Burlington, VT 05401

### ON OTHER STAGES

- ★ Lost Nation Theater's 2018 season continues with *Urinetown*, May 31-June 17; *Higher, Faster, Louder!*, June 20; *Fractured Fables (Theater for Kids by Kids!)*, June 29; *Twelfth Night*, July 12-29; *Seussical The Musical (Theater for Kids by Kids!)*, August 10-12; *Becoming Dr. Ruth*, September 6-16; Howard Frank Mosher's *Disappearances*, October 4-21. Tickets/info: [lostnationtheater.org](http://lostnationtheater.org)
- ★ Vermont Stage's season concludes with *The Bake Off 2018: Private Lives*, June 12-17. Tickets/info: [vermontstage.org](http://vermontstage.org)
- ★ Flynn Youth Theater Company presents *You're a Good Man, Charlie Brown*, featuring many of the youth who were in Lyric's *A Christmas Story, The Musical*, June 29 and 30; *Cry-Baby the Musical*, July 19-22; and *How to Succeed in Business Without Really Trying*, August 2-5. Tickets/info: [flynncenter.org](http://flynncenter.org)
- ★ Stowe Theatre Guild's 2018 Season features *Gypsy*, June 13-30; *Heathers, The Musical*, July 18-August 4; *The Bridges of Madison County*, August 22-September 8; and *The Odd Couple (Female Version)*, October 3-20. Tickets/info: [stowetheatre.com](http://stowetheatre.com)
- ★ Skinner Barn presents *Gypsy*, July 18-22 and July 25-29; and *Always...Patsy Cline*, August 1-5 and August 8-12. Tickets/info: 802-496-4422 or [theskinnerbarn.com](http://theskinnerbarn.com)
- ★ Lamoille County Players 2018 Season features *Hello, Dolly!*, July 19-29; *All Shook Up!*, September 27-October 7; and *The Cripple of Inishmaan*, November 2-11. Tickets/info: [lcplayers.com](http://lcplayers.com)
- ★ Brent Garrow will be directing *Oklahoma!* at the Enosburg Opera House this summer. Show dates are July 26, 27, and 28 at 7:00 p.m. and July 29 at 2:00 p.m. Tickets are \$15 for adults and \$12 for seniors and children. Call the Opera House at 892-933-6171. A message can be left with your name and your preferred performance date/time. Tickets will be held at the Box Office.



P.O. Box 1688  
Williston, VT 05495



Lyric Camps, Lyric Night at the Ballpark,  
and Annie Auditions: A Busy Summer!

Postage  
here

**The Spotlight:** A monthly publication of Lyric Theatre Company. To submit material for the next issue, email boerap@champlain.edu.

Distribution questions? Call 802-658-1484.

**Deadline for August issue: July 28, 2018**

**AT YOUR SERVICE—LYRIC THEATRE COMPANY BOARD & STAFF**

Christopher Brown	christopherbrownvt@gmail.com
Andrea Cronan	andrecronan@hotmail.com
Tom Dunn	tedunn@comcast.net
Kathy Grise	kgrise@comcast.net
Tim Henderson	zeyde88@gmail.com
Sean Leach	leachs@aol.com
Mary Lee	MaryMLVT@gmail.com
Shane McCormack	smccormack@pfclaw.com
MaryBeth Nuovo	mbnuovo@aol.com
Annie Ode	ode.annie@gmail.com
Andy Pearson	apearson@sbschools.net
Skip Potter	spotter@rlvallee.com
Roz Saunders	rzsaunders@yahoo.com
Karen Sheedy	kos@jmmcpa.net
Doug Viehmann	avidvi@msn.com
Margaret Welch	tapwelch@aol.com
Jose Rincon, <i>Executive Director</i>	jose@lyrictheatrevt.org
Doris O'Brien, <i>Bookkeeper</i>	doris@lyrictheatrevt.org
Andriana Chobot, <i>Administrative Assistant</i>	office@lyrictheatrevt.org
Kristina McSalis, <i>Campaign Assistant</i>	kristina@lyrictheatrevt.org

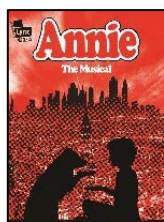
**MEETING TIMES FOR LYRIC'S STANDING COMMITTEES**  
**Board (Chair: Rosalind Saunders):** 3rd Tuesday of the month, 6:30 p.m., Lyric Office, 7 Green Tree Dr., South Burlington  
**Facilities (Chair: Doug Viehmann):** 1st Monday of the month, 6:00 p.m., Lyric Office, 7 Green Tree Dr., South Burlington  
**PR/Development (Chair: Annie Ode):** 1st Tuesday of the month, 6:00 p.m., Lyric Office, 7 Green Tree Dr., South Burlington  
**Education (Chair: MaryBeth Nuovo):** 2nd Tuesday of the month, 6:00 p.m., Lyric Office, 7 Green Tree Dr., South Burlington  
**Finance (Chair: Karen Sheedy):** Meeting details TBA  
**Membership (Chair: Christopher Brown):** 4th Tuesday of the month, 7:00 p.m., home of the O'Connell's, Burlington  
**Show Selection (Chair: Sean Leach):** Monthly, Time TBA, Location varies  
**Technology (Chair: Andy Pearson):** 3rd Thursday of the month, 6:00 p.m., Lyric Office, 7 Green Tree Dr., South Burlington

**SPOTLIGHT IS ON VACATION IN JULY**  
*By Pat Boera*

As is tradition, we won't be publishing a July issue of the *Spotlight* since your editor is on vacation. Time-sensitive articles should be sent to the Lyric Office for inclusion in our periodic e-newsletters. Otherwise, remember that the deadline for the August issue will be July 28.

**WATCH FOR YOUR TICKET MAILER**

Tickets for our 2018-2019 season go on sale to members this summer and to the public in September. Watch for your ticket mailer and get your order in right away!



**November 8-11, 2018**  
**Flynn Center MainStage**  
**Burlington, VT**

*Show Sponsor* **VERMONT FEDERAL CREDIT UNION** *Media Partner* **WCAX**